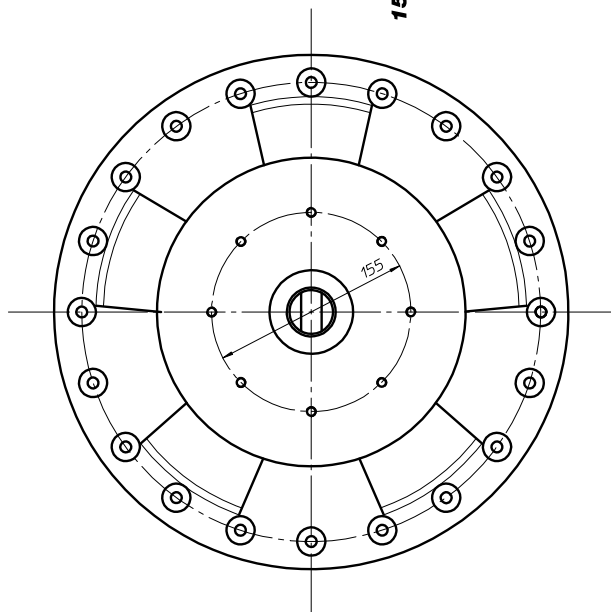
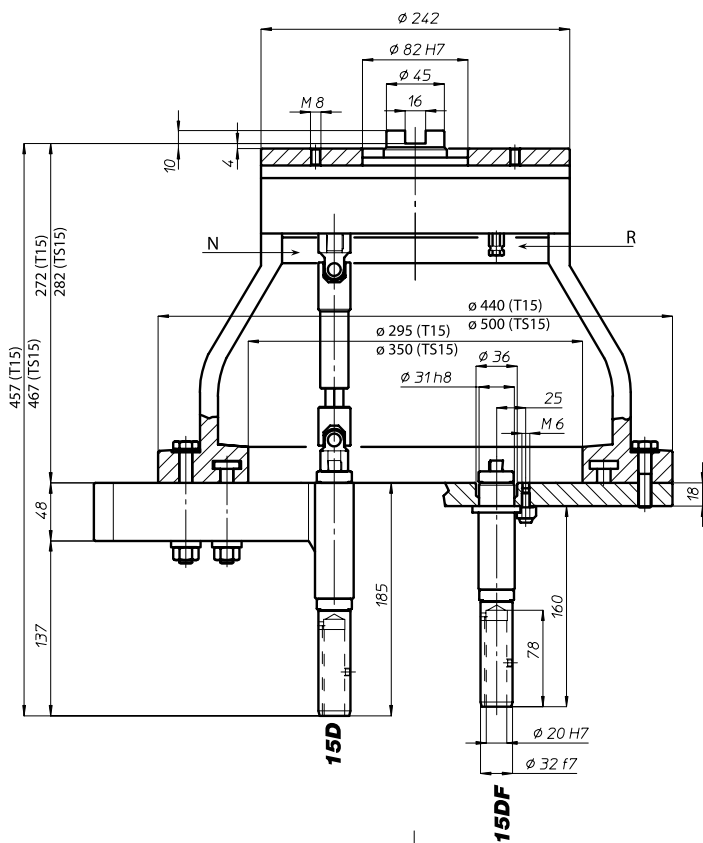
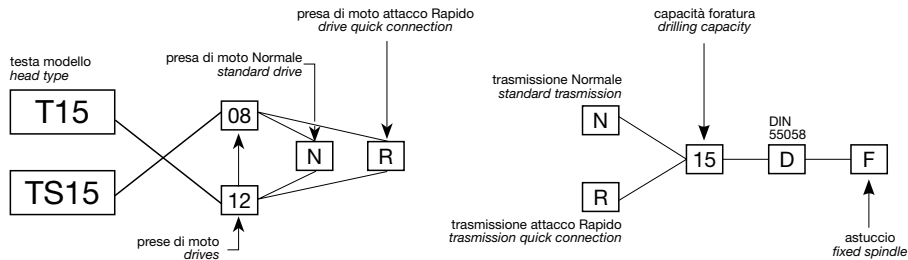


T15-TS15

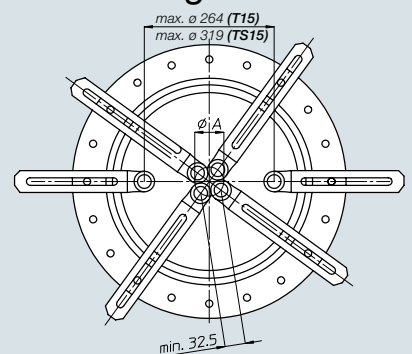
Codice testa
Head code

Codice mandrino
Spindle code



| | | |
|--|---|-------------------------------|
| | N° prese di moto Nr. spindle drives | 08-12 |
| | Rapporto Ratio | 1-1 |
| | Capacità di foratura Drilling capacity acciaio R=500 N/mm ² ghisa: GG25 | 13 15 |
| | Maschiatura Tapping | M12 |
| | Attacco utensile Type of spindle D | DIN 55058 Ø20 |
| | Peso gruppo testa Head weight | T15: Kg 21,5 TS15: Kg 24,5 |
| | Peso gruppo mandrino Spindle-set weight | Kg 2,6 |

area di lavoro working area



| Ø A | n° mandrini n° spindles |
|-------|----------------------------|
| 38 | 3 |
| 46,5 | 4 |
| 56 | 5 |
| 65,5 | 6 |
| 75,5 | 7 |
| 85,5 | 8 |
| 95,5 | 9 |
| 105,5 | 10 |
| 116 | 11 |
| 126 | 12 |



BAH

TA.CP

TA

MO

HT

VH

TSI/TSX

T

MT-TC-TC3

Accessori
Accessories

Appendice tecnica
Technical supplement

8-7