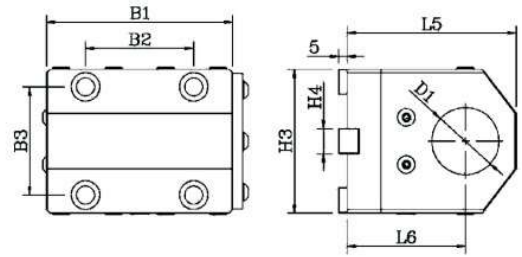
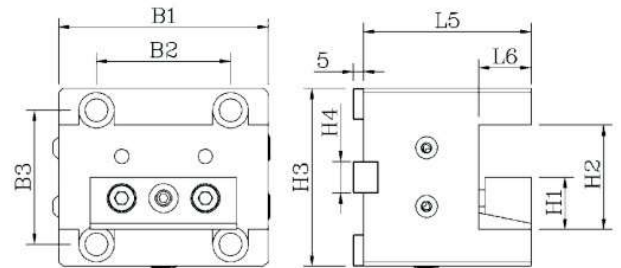


BMT镗孔刀座



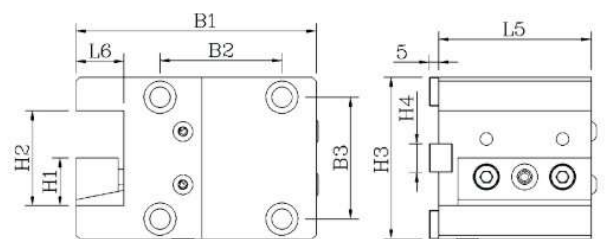
| 产品编号 | 适配刀塔标准 | B1 | B2 | B3 | H3 | H4 | L5 | L6 | D1 |
|--------|--------|-----|----|----|----|----|-----|----|----|
| BT4025 | BMT40 | 92 | 60 | 50 | 63 | 12 | 83 | 60 | 25 |
| BT4532 | BMT45 | 95 | 58 | 58 | 75 | 15 | 91 | 65 | 32 |
| BT5540 | BMT55 | 110 | 64 | 64 | 85 | 15 | 100 | 70 | 40 |
| BT6550 | BMT65 | 126 | 70 | 73 | 95 | 18 | 116 | 72 | 40 |

BMT端面刀座



| 产品编号 | 适配刀塔标准 | B1 | B2 | B3 | H1 | H2 | H3 | H4 | L5 | L6 |
|--------|--------|-----|----|----|----|----|----|----|----|----|
| BD4020 | BMT40 | 81 | 60 | 50 | 20 | 40 | 75 | 12 | 65 | 20 |
| BD4520 | BMT45 | 90 | 58 | 58 | 20 | 40 | 75 | 15 | 80 | 20 |
| BD5525 | BMT55 | 100 | 64 | 64 | 25 | 50 | 85 | 15 | 80 | 25 |
| BD6525 | BMT65 | 100 | 70 | 73 | 25 | 50 | 96 | 18 | 82 | 25 |

BMT外圆刀座



| 产品编号 | 适配刀塔标准 | B1 | B2 | B3 | H1 | H2 | H3 | H4 | L5 | L6 |
|--------|--------|-----|----|----|----|----|----|----|----|----|
| BY4020 | BMT40 | 97 | 60 | 50 | 20 | 40 | 75 | 12 | 55 | 20 |
| BY4520 | BMT45 | 105 | 58 | 58 | 20 | 40 | 75 | 15 | 60 | 20 |
| BY5525 | BMT55 | 126 | 64 | 64 | 25 | 50 | 85 | 15 | 80 | 25 |
| BY6225 | BMT65 | 131 | 70 | 73 | 25 | 50 | 97 | 18 | 75 | 25 |